

WHY ROOFLINK911™?

WE CAN SAVE OUR MULTI LOCATION CLIENTS STATISTICALLY 10%-20% OVER A 5 YEAR PERIOD ON BUDGETED ROOF EXPENDITURES "WHAT DOES IT COST YOU IF YOU MISS A CLAIM"

- Reduce your roof capital expenditures through proper insurance compensation focused on hail and wind damages
- We have a 98% win rate and specialize in turning over rejected complex commercial roof claims
- login to our servers and track all your claims and get automatic email updates

WEATHER TRACKING TECHNOLOGY

- We partner with Multiple storm tracking firms to get factual real-time storm data pinpointed to each roof structure you contract with Rooflink911
- We monitor and review damages reports daily for our clients – just login to your roof link account follow your damage reports and valid claims- Full transparency process

CONSTRUCTION ENGINEERING EXCELLENCE BACKING UP THE PROCESS: SERVING THE ENTIRE USA

- over 1000 certified inspectors and engineers in our network
- over 40 specialty crews installing commercial flat and sloped roofing structures on time and on budget

ROOFLINK911™ FAQ'S

HAIL FACTS

Hail causes billions of dollars of damage each year in the U.S. alone

Hail one inch (quarter size) or larger is considered "severe"

National Weather Service Doppler Radar can estimate the size of hail by the amount of energy reflected back to the radar by the storm.

Large hailstones can fall at speeds faster than 160 kilometers (100 miles) per hour.

TOP 10 REASONS WHY ROOF CLAIMS ARE DENIED

1. Inexperienced roofers – poorly trained sales staff.
Out of state storm chasers creating confusion
2. Poor estimates of damage. Incomplete assessment reports
3. Poor understanding of insurance process
4. Non-certified inspectors
5. No engineering support to quantify storm-related damage
6. Poor Quality Control Program for estimating damage.
7. Poor baseline surveys of pre-existing conditions
8. Poor Claim reaction time.
9. Poor weather forensics
10. No legal representation



Interested in being a agent for Rooflink911 Solutions? Call us now for details



Multiple Service Areas & Fast Emergency Response times
Full Service Restoration
Professional Engineering
High Quality

ATLANTA HEADQUARTERS
1270 Winchester Parkway
Suite 206
Smyrna, GA 30080
Office: 770-435-8800
Fax: 770-435-8844

CHARLOTTE OFFICE
8421 Old Statesville Road
Unit #1
Charlotte, NC 28269
Office: 704-494-0000
Fax: 704-494-0004

TOLL FREE:
1-888-710-1113

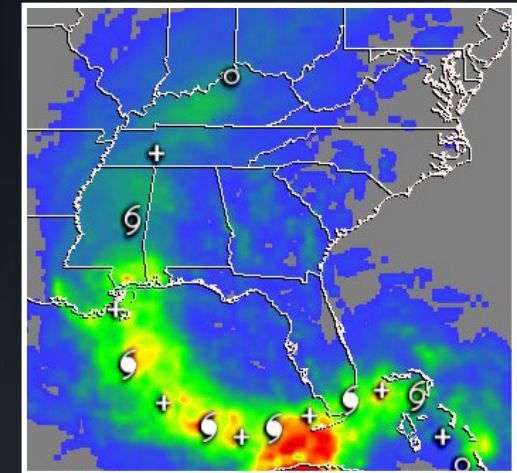
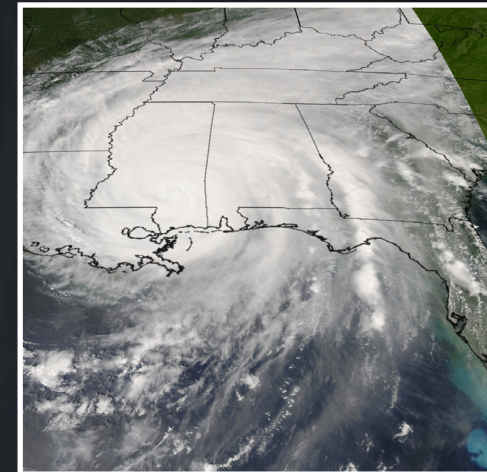
INFO@ROOF911NOW.COM



WWW.ROOFLINK911.COM

ROOFLINK911

NATIONAL STORM MONITORING SYSTEM



NATIONAL STORM SOLUTIONS, DISASTER PLANNING AND RISK REDUCTION FOR COMMERCIAL CLIENTS

WWW.ROOFLINK911.COM



ROOFLINK911™ SERVICE BENEFITS

COST SAVINGS, ASSET PROTECTION, AND FINANCIAL PLANNING

- Allows commercial partners and real estate management firms to minimize costs and maximize investment
- Proactive approach mitigates subsequent damage from leaking and rot
- Clients understand the rate of engineering failure in context with historical weather records and can better optimize facility maintenance through preventative engineering

ONE CONTACT, COMPLETE PROTECTION

- The ROOF LINK 911™ network catalogues all client facilities and offers baseline phase 1 and phase 2 inspections
- Weather records are cross checked with client locations and when severe weather strikes the client is notified by a ROOF 911™ professional
- Professional support ensures clients get the most from their buildings and insurance policies

HISTORICAL INSPECTION AND WEATHER RECORDS

- Baseline inspections are stored in the ROOF LINK™ database allowing for the definitive identification of storm related damage
- Certified weather reports provide evidence of severe weather

TRANSPARENCY FOR CLAIMS GUARANTEES INSURANCE ACCOUNTABILITY

- Historical records in combination with ROOF 911™ professionals experienced in insurance negotiation results in complex claims to be won

Roof LINK 911™ is a powerful system in the world of building maintenance and asset protection that allows clients to realize substantial savings from storm related damages while providing them disaster planning.

LEVELS OF PROTECTION

SILVER PROTECTION

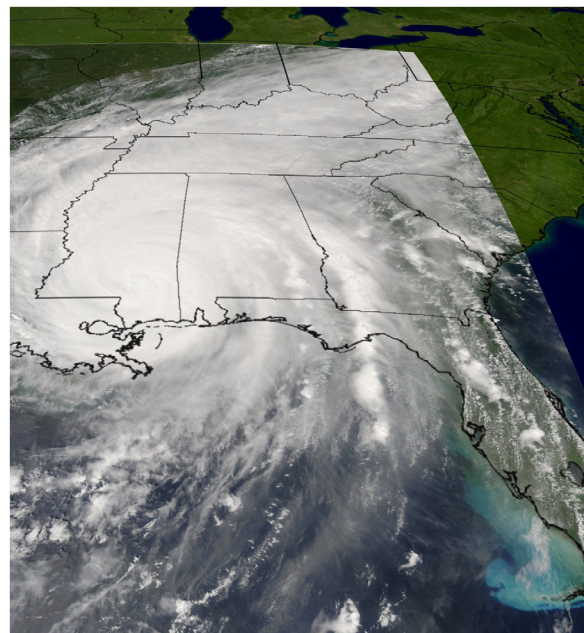
- Includes phase 1 checklist
- Client access to upload photos to ROOF LINK 911™ database

GOLD PROTECTION

- Includes phase 1 checklist
- Client access to upload photos to ROOF LINK 911™ database
- Phase II inspection for 10% of the most critical buildings

PLATINUM PROTECTION

- Includes phase 1 checklist
- Client access to upload photos to ROOF LINK 911™ database
- Phase II inspection for 50% of the most critical buildings



THE ROOFLINK911™ PROTECTION PROCESS

We have created a technology based solution so you can login and manage all your roof structures with full transparency and never miss a insurance claim – be proactive not reactive



REFERENCES

Blue Valley Farms	Best Western Hotel, Roswell
Chatham Holdings	Super 8 Hotel, Lavonia
Atlanta Athletic Club	Travel Lodge, Athens
Christ Worship Church	Creekside Homeowners Assoc.
Christ Lutheran Church	Meridian Property Management
Covenant Christian Center	First United Methodist, Mallalieu

FULL LIST AT WWW.ROOF911.COM

COMMERCIAL CLIENTS

